

CURCUNA

SÜRE = 4', 24"

♩ = 200

HÜSEYNÎ ŞARKI
(SIRA DAĞLAR MORDU SULAR KIRMIZI)

MÜZİK : SELÂHADDİN İCLİ

SÖZ : R.T.BÖLÜKBAŞI

(Saz -----)

SI - RA DAĞ - LAR MOR - DU SU - LAR KIR - MI - Zİ

SU - LA - RI BEK - LER - Dİ BİR PE - Rİ KI - Zİ

Ö - PER - KEN AL - NIN - DAN AK - SAM YIL - DI - Zİ

YE - ŞİL GÖZ - LE - Rİ - NE MEF - TÜN DÜR SAN - DIM

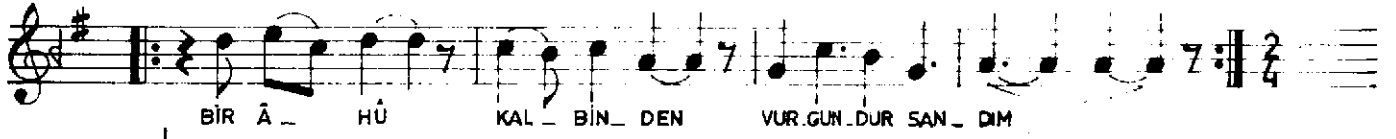
DIM Saz *pp* *pp*

SU KE - NAR - LA - RIN - DA LÂ - LE - LER VAR - DI

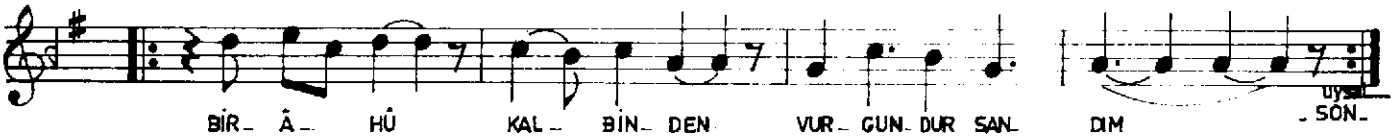
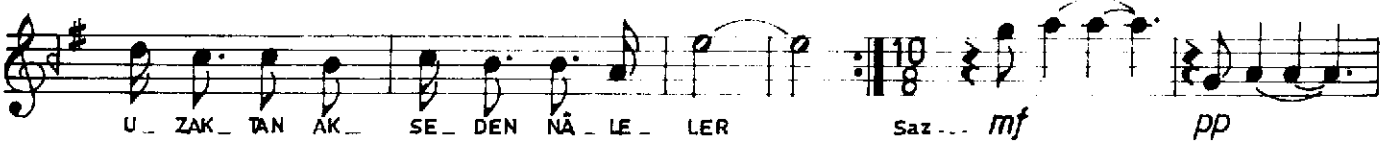
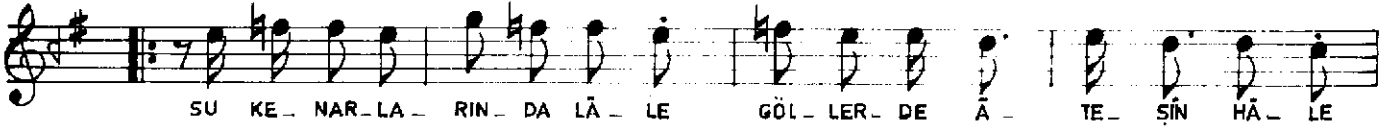
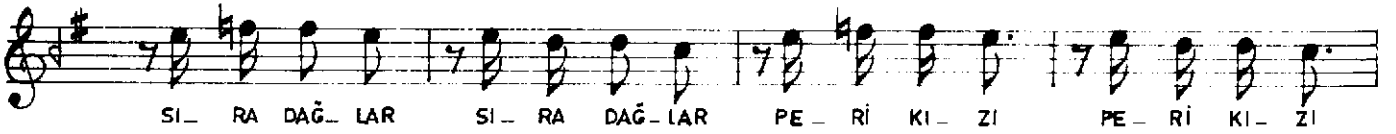
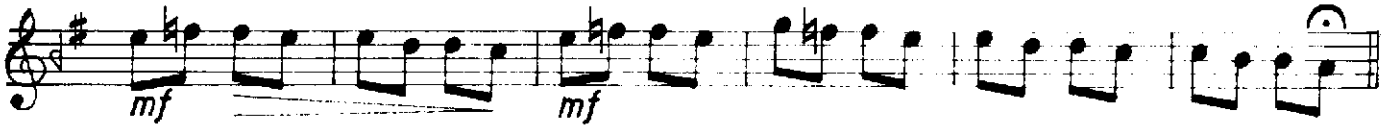
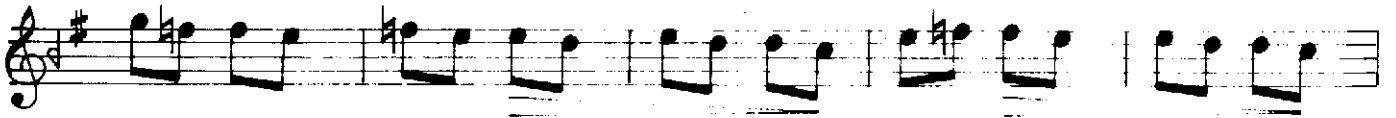
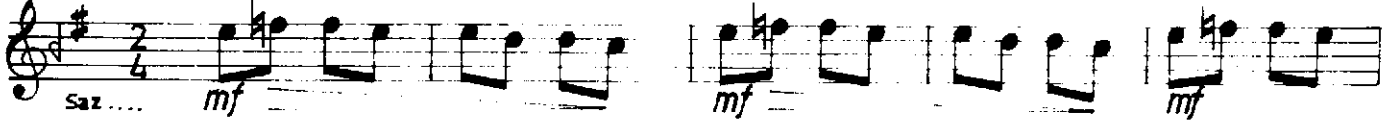
GÖL - LER - DE Â - TE - ŞİN - HÂ - LE - LER VAR - DI

U - ZAK - TAN AK - SE - DEN NÂ - LE - LER VAR - DI

HÜSEYNÎ ŞARKI
(Sıra dağlar mordu sular kırmızı)
(Sahife - 2)



NİM SOFYAN (♩ = 80)



SIRA DAĞLAR MORDU, SULAR KIRMIZI
ŞULARI BEKLERDİ BİR PERİ KIZI
ÖPERKEN ALNINDAN AKŞAM YILDIZI
YEŞİL GÖZLERİNE MEFTUNDUR SANDIM

SU KENARLARINDA LÂLELER VARDI
GÖLLERDE ATEŞİN HÂLELER VARDI
UZAKTAN AKSEDEN NÂLELER VARDI
BİR ÂHÜ KALBINDEN VURGUNDUR SANDIM

Rıza Tevfik Bölükbaşı

Hece = 6 + 5